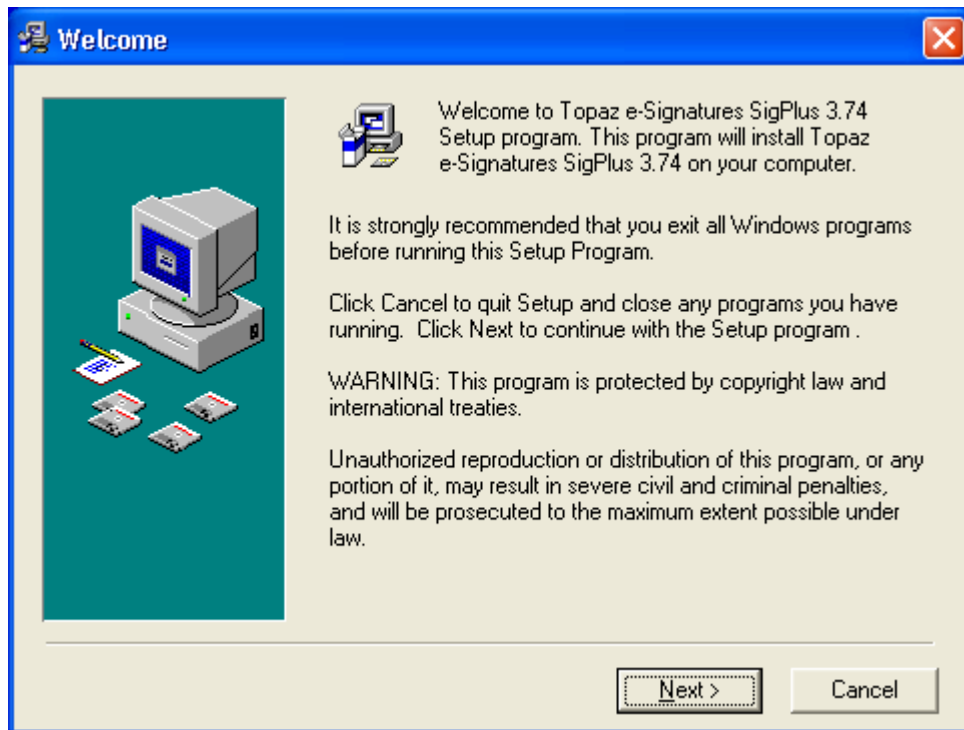
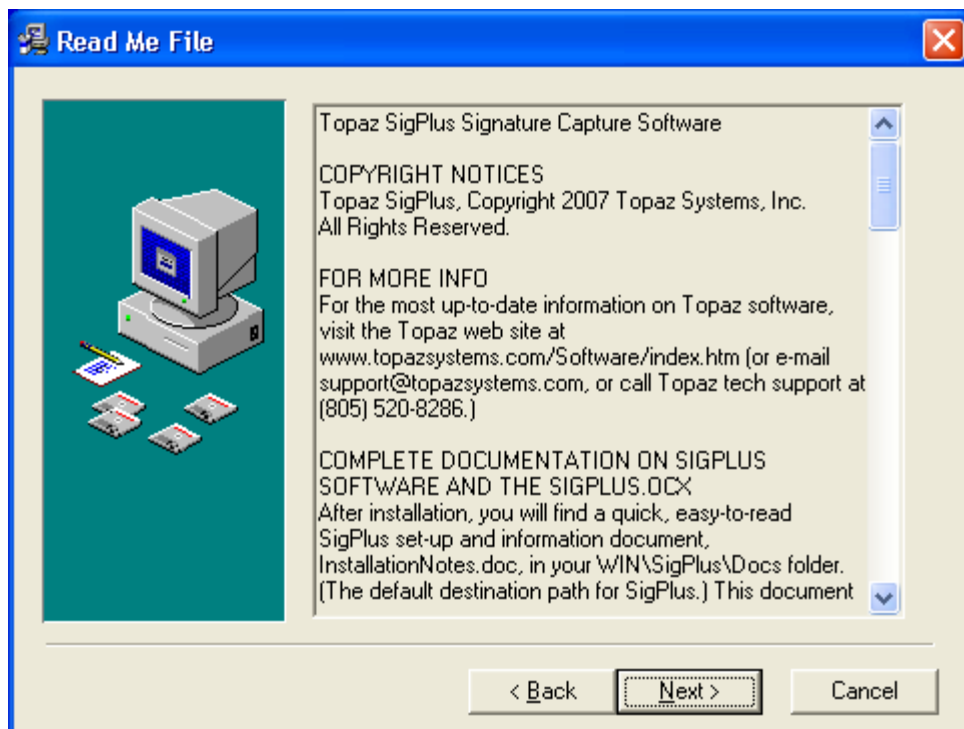


Topaz Signature Pad Driver Installation Instructions

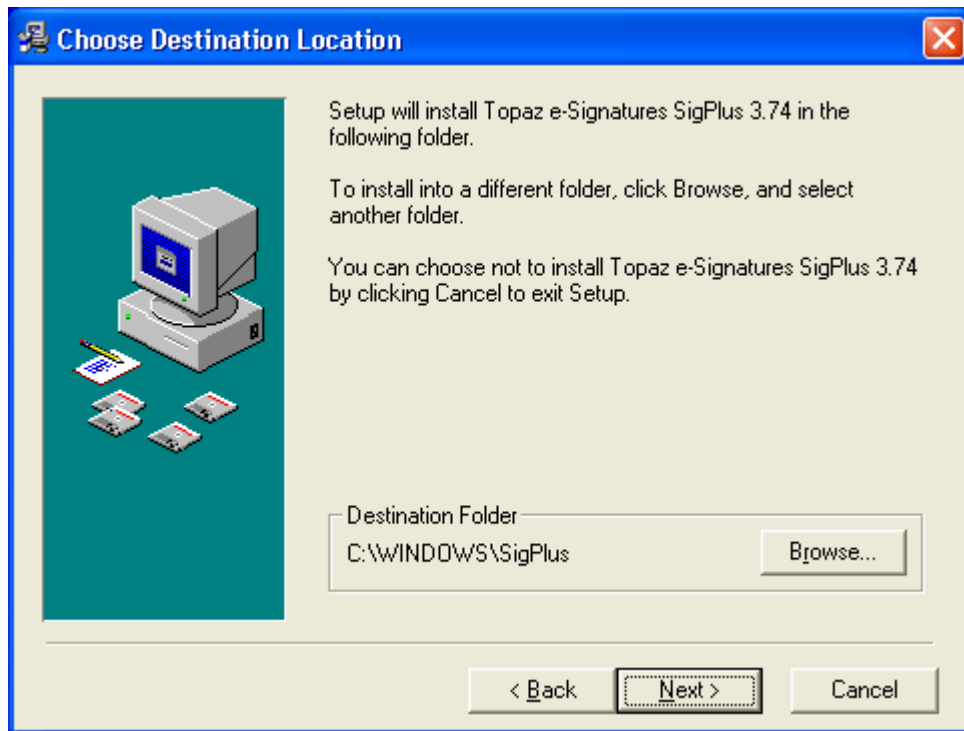
Start “SigPlus.exe” program and click Next.



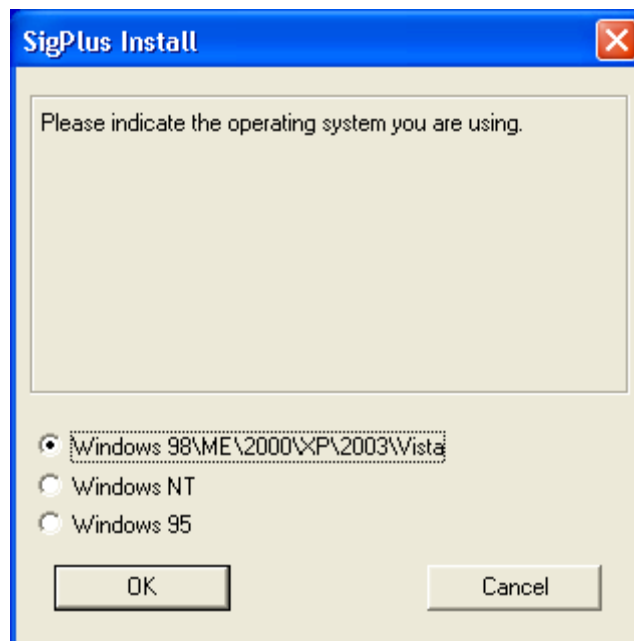
Read notice and then click Next:



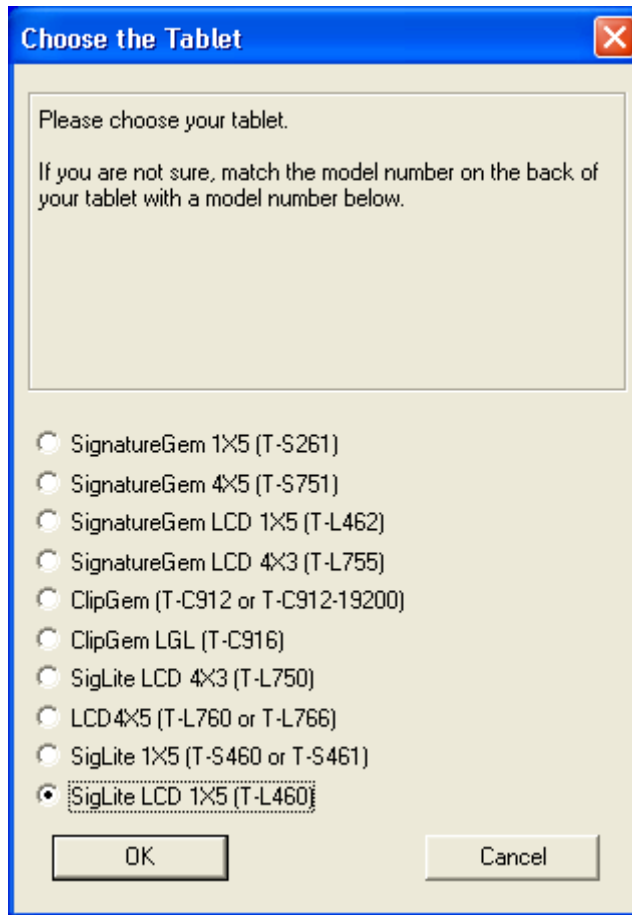
Choose Destination Location and then click Next.



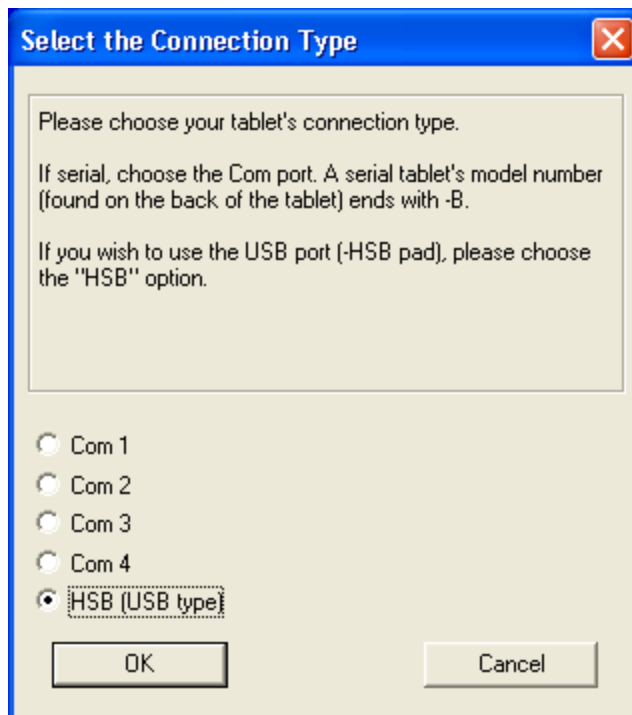
Choose Operating System and then click OK.



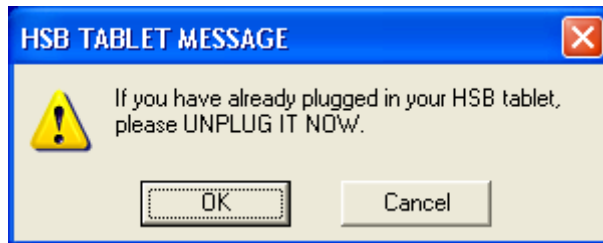
Choose the Tablet (only SigLite 1x5 and LCD 1X5 are currently supported), then click OK.



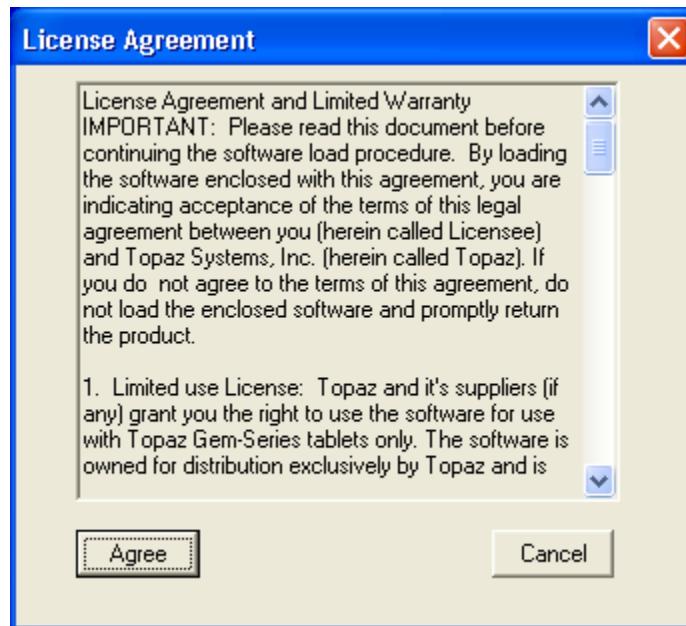
Select USB Connection Type and then click OK.



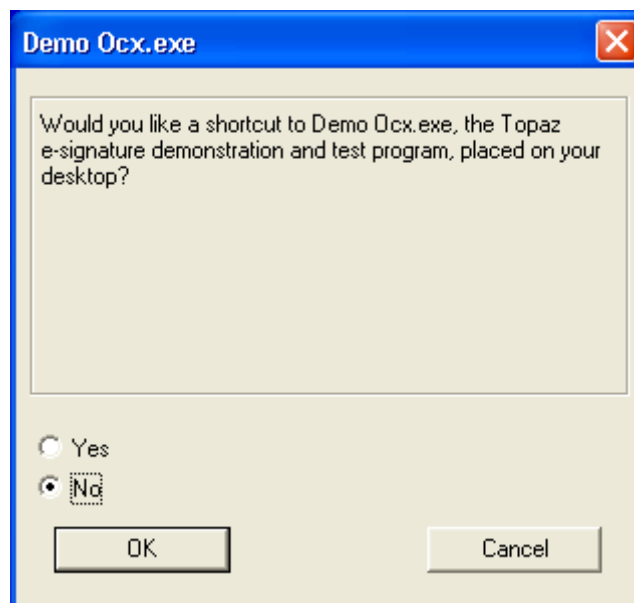
Do not connect the pad until software installation is completed. Click OK.



Read License Agreement and click Agree.



Select No and then click OK (no need to have the Ocx.exe program when using the Bio-Pen programs).



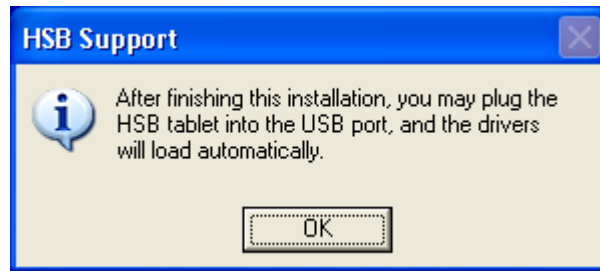
Click OK.



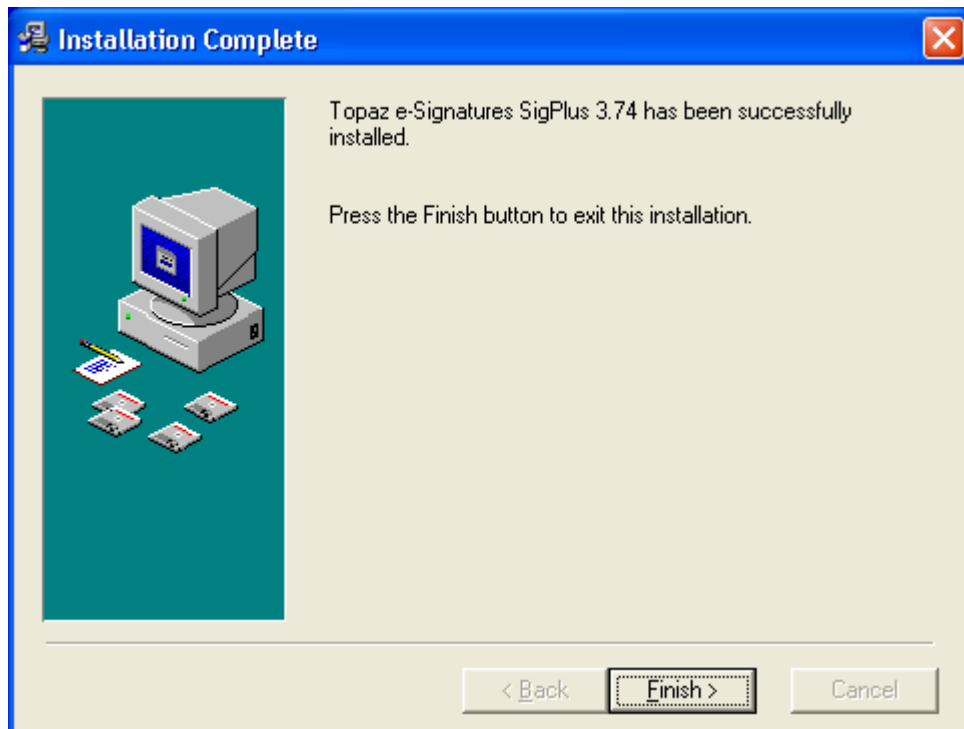
Click OK.



Click OK.



Click Finish.



Once the Topaz driver installation is complete, all Bio-Pen programs will automatically recognize the pad hardware when connected.